

# **USER MANUAL**

# **VERBATIM PORTABLE HARD DRIVE**

Dear user!

EN

Thank you for selecting the **Verbatim portable Hard Drive** as your external data storage device. For optimal use and performance we advise you to read this manual carefully before using this product.

Please note: this manual is a general manual which is used for several Verbatim products. Product pictures shown in this manual may differ from the device you bought.

## Contents of the box

Please check the contents of the box. All articles included in this box are listed on the back side of the packaging.

### Need assistance? Have questions?

In case you have a question about the use of this product, need information about other Verbatim products or need technical assistance, please contact the Verbatim Service Center for your country. See [www.verbatim-europe.com/support](http://www.verbatim-europe.com/support) for details.

### Warning !

All rights reserved. The products named in this manual are only used for identification purposes and may be trademarks or registered trademarks of the respective companies. This device was designed for home or office use.

Warning! This device is equipment complying with EN55022 class A. This equipment can cause radio disturbances in a residential area. If this is the case, the user has to take appropriate measures and assume all responsibility and costs for. It may not be used near or with any life-sustaining systems.

Verbatim cannot be made liable for any damages, loss of data or damage following thereof -whatsoever (including, without limitation, damages for loss of business profits, business interruption, loss of business information, or other pecuniary loss) arising out of the use of or inability to use this Verbatim product, even if Verbatim has been advised of the possibility of such damages.

We reserve the right to upgrade our products in keeping with technological advances.

## Table of Contents

**EN**

General Information .....	page	4
Precautionary measures .....	page	5
Verbatim portable Hard Drive .....	page	6

## Chapter

Hardware Installation .....	page	7
-----------------------------	------	---

## Chapter

Driver Installation .....	page	7
---------------------------	------	---

## Chapter

Installation of the application software .....	page	8
--	------	---

## Chapter

Partitioning your Verbatim portable Hard Drive.....	page	10
---	------	----

## Chapter

Technical Support .....	page	20
Limited Warranty Terms .....	page	21
Rights .....	page	21
FCC Compliance .....	page	22
WEEE Notice .....	page	22
CE Declaration .....	page	23
RoHS Compliance .....	page	23

## General Information

The following hardware and software requirements must be fulfilled to ensure trouble-free operation.

### System requirements

In order to use the Verbatim portable Hard Drive, following components are needed:

#### PC:

- Intel Pentium III / AMD Duron 900 MHz or higher
- 512 MB RAM or higher
- Available USB 3.0/2.0 port\*
- Internet connection for online warranty registration, software updates and downloads
- Operating system: Windows XP, Windows Vista, Windows 7

#### Mac:

- PowerPC G5 or Intel Mac
- 256 MB RAM or higher
- Available USB 2.0/3.0 port\*
- Internet connection for online warranty registration, software updates and downloads
- Operating system: Mac OS X v10.4.6 or higher

\* Please use the interface cables that come with your device (e.g. USB) for connecting the device to your PC/Mac.

## Precautionary measures

To ensure that your Verbatim portable Hard Drive functions properly, please take note of the following precautions. If these are not followed, you may void your warranty and damage the Verbatim portable Hard Drive.

- Safely remove the Verbatim portable Hard Drive via your operating system (the "unplug or eject hardware" option in the Windows taskbar) before disconnecting the USB cable. Failing to do so may result in data loss.
- Do not drop the Verbatim portable Hard Drive or expose it to other kinds of sudden mechanical shocks as this may result in data loss and damage to the Verbatim portable Hard Drive.
- Do not use the Verbatim portable Hard Drive when the ambient temperature is below 10°C or above 35°C.
- If the Verbatim portable Hard Drive is moved from a cool environment to a warmer environment, please allow the drive to acclimatize to the ambient temperature before operating the device. Failing to do so may lead to condensation within the drive enclosure, which in turn may cause the drive to malfunction.
- Do not place liquids or drinks on the Verbatim portable Hard Drive. When liquids are spilled and get in contact with the electronics within the drive enclosure, it will damage the drive and will cause the drive to malfunction.
- Do not use the Verbatim portable Hard Drive in a dusty environment. Dust inside the enclosure may damage the internal electronics and result in drive malfunction.
- Opening the Verbatim portable Hard Drive will void the warranty.
- Since USB 3.0 is backwards compatible with USB 2.0, the Verbatim portable Hard Drive can be connected to all USB ports. When connected to a USB 2.0 port, however, the performance (data transfer rate) of the Verbatim portable Hard Drive will be much lower than when the drive is connected to a USB 3.0 port.

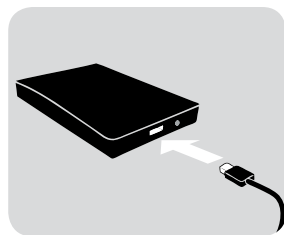
If at any point during installing and/or configuring your Verbatim portable Hard Drive you need assistance or have questions, please contact the Verbatim Support Center for your country. See [www.verbatim-europe.com/support](http://www.verbatim-europe.com/support) for details.

## Verbatim portable Hard Drive

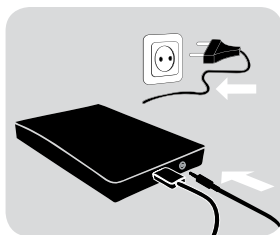
The hi-speed data transfer through the (e.g. USB) interface makes it ideally suitable for data-storage, file sharing, backup, archiving, audio playback and all applications that need fast file access.

For your convenience, the Verbatim portable Hard Drive has been partitioned (1 partition) and pre-formatted (FAT32 file system). The FAT32 format ensures maximum interchangeability of the Verbatim portable Hard Drive between different computers. Should you choose to format the Verbatim portable Hard Drive in another file system (e.g. NTFS), please be aware of possible problems when connecting the Verbatim portable Hard Drive to another computer than the one you used for formatting.

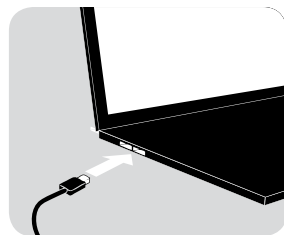
## Chapter: Hardware Installation



1.



2.



3.

1. Connect the interface cable\* to the Verbatim portable Hard Drive.
2. **Optional:** Connect the cable of the power supply to the Verbatim portable Hard Drive and the power supply itself to the socket.
3. Connect the interface cable\* to the interface port of your computer.
4. **Optional:** if your device comes with a power switch, switch on the device before using it.

\* Please use the interface cables that come with your device (e.g. USB) for connecting the device to your PC/Mac.

Since USB 3.0 is backwards compatible with USB 2.0, the Verbatim portable Hard Drive can be connected to all USB ports. When connected to a USB 2.0 port, however, the performance (data transfer rate) of the Verbatim portable Hard Drive will be much lower than when the drive is connected to a USB 3.0 port.

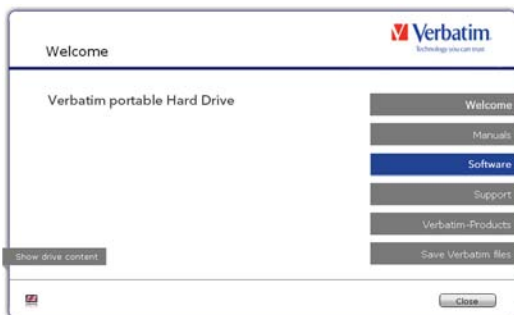
For optimum performance the Verbatim portable Hard Drive should always be connected to a USB 3.0 interface.

## Chapter: Driver Installation

Under Windows XP/Windows Vista/Windows 7 and Mac OS X a separate Verbatim driver is not required. The drivers will be installed automatically by the operating system after plugging in the Verbatim portable Hard Drive into the interface port of the computer.

### Software installation PC

1. Click on "Start PC.exe" in the main directory of the hard drive. The Verbatim start menu opens.



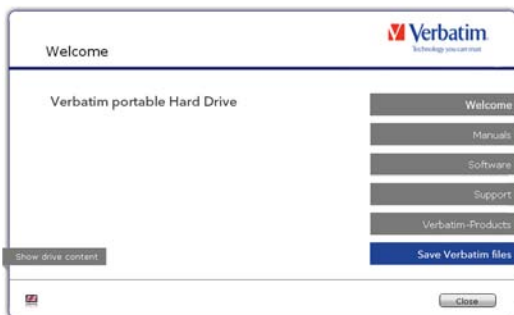
2. Click on "Software". The installation starts now. Follow the instructions on the screen, confirm with "Next" in order to continue with the installation.

### Saving Verbatim data

The user manuals and complementary software (when applicable) are pre-loaded onto the hard drive. We recommend that you save these files to your computer ("My Documents"/"Verbatim"), to always have a backup of these files in case you (accidentally) reformat the drive or delete these files from the drive.

Saving these files from the external hard drive to your computer is easy:

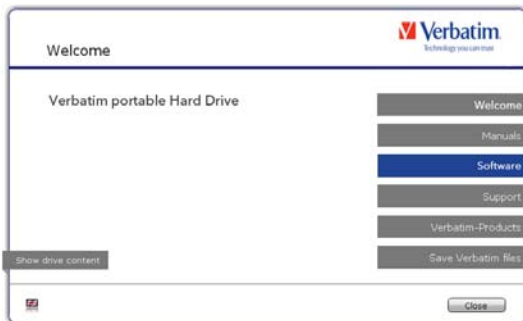
1. Click on the button "Save Verbatim files".
2. All provided data on the Verbatim hard drive will be saved to the folder "Verbatim" in "My Documents".





## Software installation Mac

1. Click on "Start MAC" in the main directory of the hard drive. The Verbatim start menu opens.



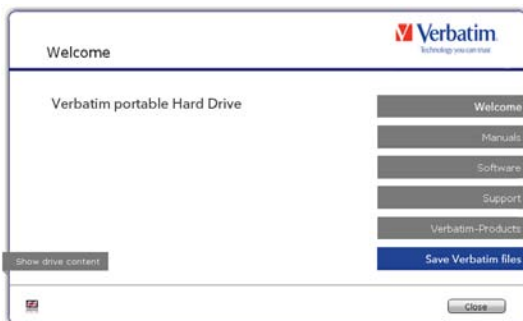
2. Click on "Software". The installation starts now. Follow the instructions on the screen, confirm with "Next" in order to continue with the installation.

### Saving Verbatim data

The user manuals and complementary software (when applicable) are pre-loaded onto the hard drive. We recommend that you save these files to your computer ("Documents"/"Verbatim"), to always have a backup of these files in case you (accidentally) reformat the drive or delete these files from the drive.

Saving these files from the external hard drive to your computer is easy:

1. Click on "Start MAC" in the main directory of the hard drive. The Verbatim start menu opens.
2. Click on the button "Save Verbatim files".
3. All provided data on the Verbatim hard drive will be saved to the folder "Verbatim" in "Documents".



## Using Time Machine with your Verbatim portable Hard Drive

Time Machine allows you making automated backups of your complete system under Mac OS X 10.5 and Mac OS 10.6 or higher.

1. Connect your Verbatim portable Hard Drive via the interface to your Mac. If you did not specify a backup volume yet, Time Machine will ask you when connecting the Verbatim portable Hard Drive for the first time if the device shall be used as backup drive.
2. After your Verbatim portable Hard Drive appeared on the desktop, click on "Use as Backup Disk" to confirm that you want to use your Verbatim portable Hard Drive for Time Machine backups. In the Time Machine preferences you can configure your backup settings further.

Time Machine now automatically creates backups of your Mac. Time Machine will keep hourly backups for the last 24 hours, daily backups for the last month and weekly backups until your Verbatim portable Hard Drive is full.

The first backup can take some time, so you should set up Time Machine, for example, in the evening, so the first backup can be created overnight.

**Remark: If your Verbatim portable Hard Drive is formatted in NTFS or FAT 32 format, you need to format your hard drive in Mac OS Extended (Journaled) format. Doing so will delete ALL your data!**

### General information

Your Verbatim portable Hard Drive was partitioned and formatted to provide you with the maximum available capacity and compatibility. FAT32 was chosen as file system to assure that you will be able to read your files on any PC. It is recommended not to change the current configuration of your Verbatim portable Hard Drive.

For some users another file system might fit better for their needs. This manual describes current limitations of most common file systems and Instructions to enable you to adapt the Verbatim portable Hard Drive to your needs.

### File System features

Please refer to the tables below for an overview:

#### File systems supported by different operating systems

File system / Operating system	FAT	FAT32	NTFS	HFS+
Windows XP/Vista/7	yes	yes	yes	no
Mac OS X	yes	yes	yes (only read)	yes

#### Maximum size of a partition

File system / Operating system	FAT	FAT32	NTFS	HFS+
Windows XP/Vista/7	4 GB*	32 GB	16 TB	-
Mac OS X 10.1.x	-	128 GB	-	2 TB
Mac OS X 10.2.x	-	128 GB	-	8 TB
Mac OS X 10.3.x	-	(-> 128 GB)	-	16 TB
Mac OS X 10.4.x	-	(-> 128 GB)	-	16 TB
Mac OS X 10.5.x	-	(-> 128 GB)	-	16 TB
Mac OS X 10.6.x	-	(-> 128 GB)	-	16 TB

Example for different partitions with different file systems on one Verbatim **EN** portable Hard Drive

File system	NTFS	FAT32
Total size of Verbatim HD	220 GB	30 GB

Note: On NTFS formatted hard drives can only be written under Windows XP/Windows Vista / Windows 7. Under MacOSX data can only be read.

The example above is a good solution for Windows XP/Windows Vista/Windows 7 users who sometimes exchange data with Macs.

For storing the data under Windows XP/Windows Vista/Windows 7 both partitions can be used. As the NTFS file system can only be read by Mac data to be used on these operating systems must be stored on the FAT32 partition.

Please follow the steps below to adapt the Verbatim portable Hard Drive for your needs.

## Partitioning your Verbatim portable Hard Drive under Windows XP / Windows Vista / Windows 7

### Deleting a partition

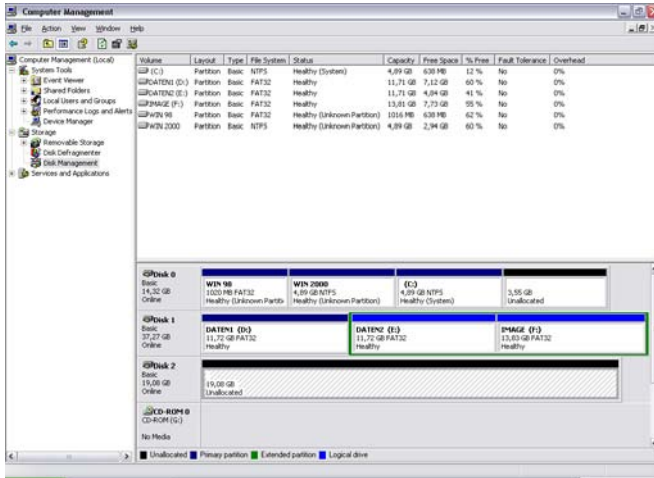
1. Click with the right mouse button on the "My Computer" icon on your desktop.
2. Select the option "Manage".
3. Select the option "Storage" -> "Disk Management".
4. Choose your external Verbatim portable Hard Drive and right-click on the partition.
5. Select "Delete Partition" and confirm by clicking on "Yes". The partition will be deleted now.

### Creating a partition

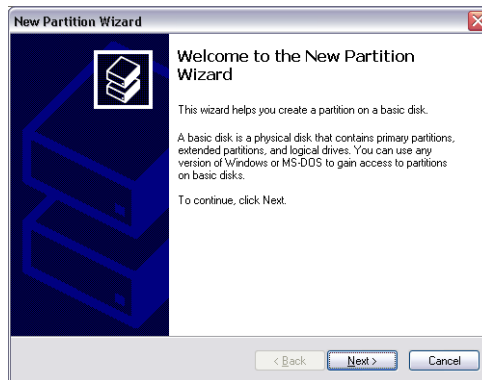
The following steps will guide you through the process of creating partitions on your Verbatim portable Hard Drive. After this procedure your Verbatim portable Hard Drive will be ready for use and it will be allocated a drive letter.

1. Click with the right mouse button on the "My Computer" icon on your desktop.
2. Select the option "Manage".
3. Select the option "Storage" -> "Disk Management".

4. Choose the hard drive, which is "unallocated". Ensure that the entire drive is "unallocated". **EN**



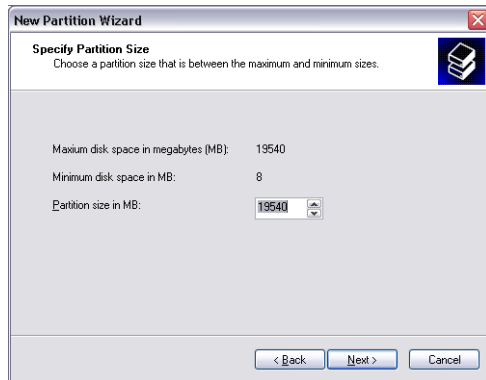
5. Click with the right mouse button on the "unallocated" area and select the option "New Partition". The "New Partition Wizard" opens. Click on "Next".



6. Select "Primary partition" and click on "Next".



7. Now you can adjust the size of your partition. Click on "Next" if only one partition is to be created. See next chapter (Creating two or more partitions on the Verbatim portable Hard Drive under Windows XP/Windows Vista/Windows 7) how to create more than one partition.

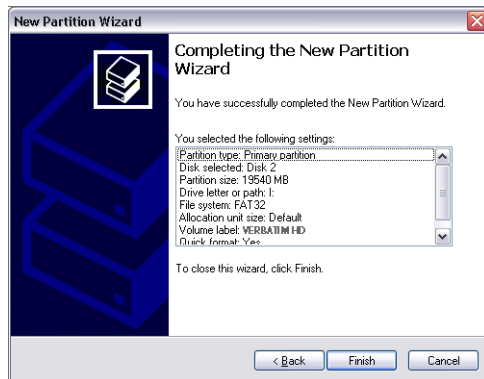


8. Assign a drive letter to your hard drive. Normally you can use the default options. Click on "Next".

9. Select the formatting option "Format this partition with the following settings". Choose either "FAT32" or "NTFS", the "Allocation unit size" should remain on "Default". Finally select "Perform a quick format" and click on "Next". **EN**

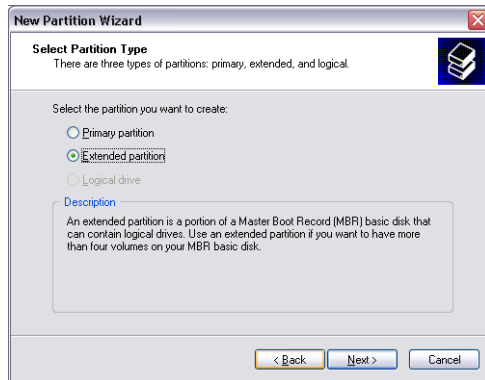


10. Click on "Finish" to complete the partitioning of your Verbatim portable Hard Drive. Your Verbatim portable Hard Drive will be formatted now and is ready-to-use afterwards.

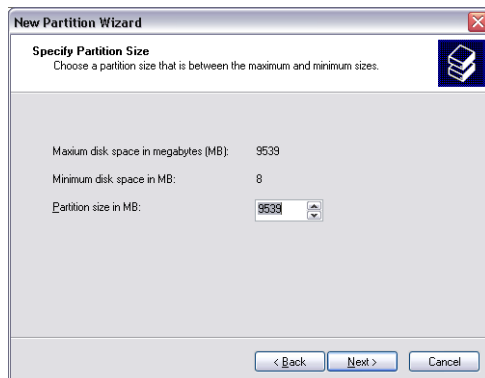


## Creating two or more partitions on the Verbatim portable Hard Drive under **EN** Windows XP / Windows Vista / Windows 7

1. Repeat the steps from the previous chapter (Creating a partition on the Verbatim portable Hard Drive under Windows XP/Windows Vista/Windows 7) for creating the first partition.
2. Click with the right mouse button on the "My Computer" icon on your desktop.
3. Select the option "Manage".
4. Select the option "Storage" -> "Disk Management".
5. Right-click on the unallocated space of your Verbatim portable Hard Drive and select the option "New partition". The "New Partition Wizard" opens. Click on "Next".
6. Select "Extended partition" and click on "Next".

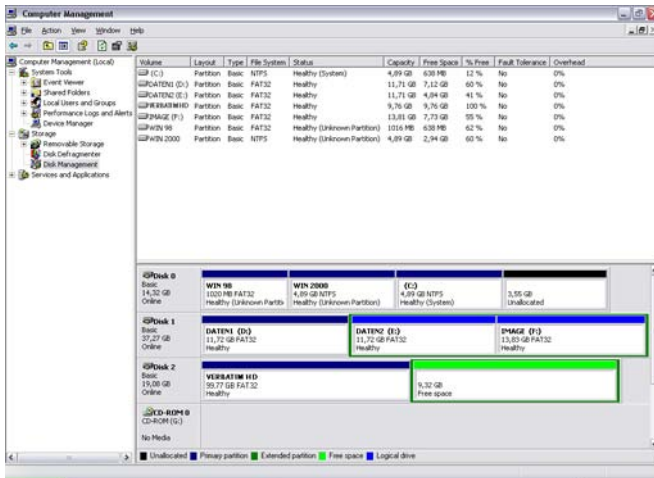
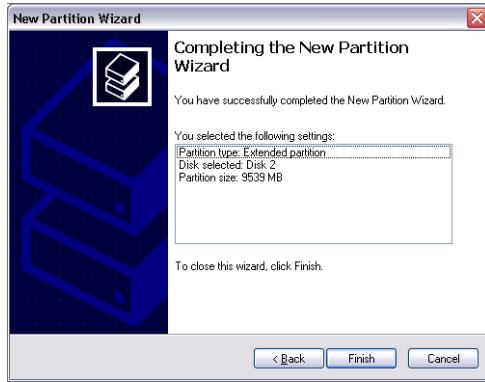


7. Now you can adjust the size of your partition. Enter the size and click on "Next".

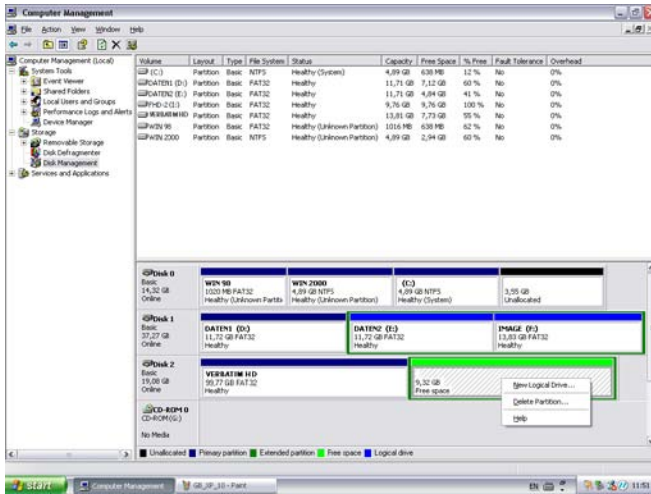




8. Click on "Finish" to create the "Extended partition". The unallocated space now changed to "Free space". **EN**



9. Right-click on "Free Space" and select "New Logical Drive". The "New Partition Wizard" opens. Click on "Next". **EN**

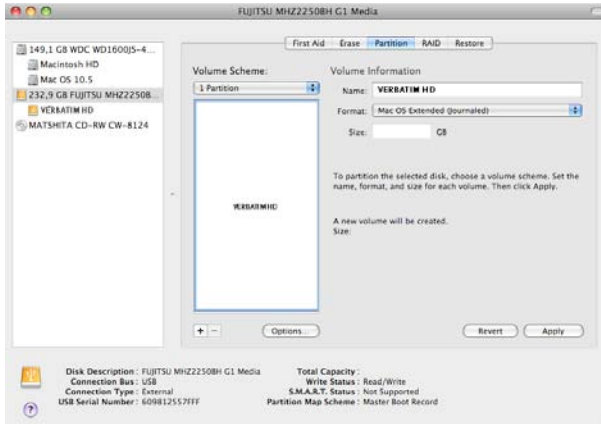


10. "Logical drive" is already selected. Click on "Next".
11. Specify the partition size and click on "Next".
12. Assign a drive letter and click on "Next".
13. Select the formatting option "Format this partition with the following settings". Choose either "FAT32" or "NTFS", the "Allocation unit size" should remain on "Default". Finally select "Perform a quick format" and click on "Next".
14. Click on "Finish" to complete partitioning. Your partition will be formatted now and is ready-to-use.

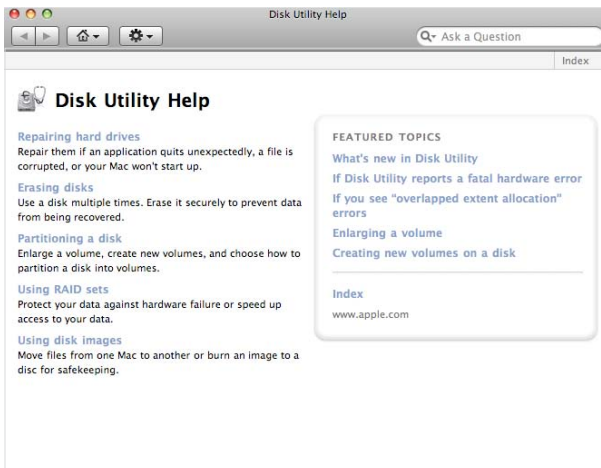
Note: If you select NTFS as file system, the data of your Verbatim portable Hard Drive can be read only under Mac OS X. There is no possibility to write data.

## Partitioning your Verbatim portable Hard Drive under Mac OS X

1. Open the "Disk Utility". This can be found in "Applications" → "Utilities".
2. Click on the tab "Partition".



Here you can setup the partition settings and partition the drive according to your settings (e.g. Mac OS Extended). Detailed information how to use the Disk Utility can be found in the help:



## Technical Support

If you are experiencing difficulty installing or using your Verbatim product, please visit the main Verbatim Technical Support website at [www.verbatim-europe.com/support](http://www.verbatim-europe.com/support). From this page you can access our library of user documentation, read answers to frequently asked questions, and download available software updates. Although most of our customers find this content sufficient to put them back on the right track, this page also lists ways in which you can contact the Verbatim Technical Support Team directly.

Country	Email	Hotline Number
United Kingdom	support.uk@verbatim-europe.com	00 800 3883 2222
France	support.fr@verbatim-europe.com	00 800 3883 2222
Deutschland	support.de@verbatim-europe.com	00 800 3883 2222
Italia	support.it@verbatim-europe.com	00 800 3883 2222
España	support.es@verbatim-europe.com	00 800 3883 2222
Portugal	support.pt@verbatim-europe.com	00 800 3883 2222
Polska	support.pl@verbatim-europe.com	00 800 3883 2222
Россия	support.ru@verbatim-europe.com	+353 61 226586
Česko	support.cz@verbatim-europe.com	+353 61 226586
Magyarország	support.hu@verbatim-europe.com	00 800 3883 2222
Eesti	support.ee@verbatim-europe.com	+353 61 226586
Latvija	support.lv@verbatim-europe.com	+353 61 226586
Lietuva	support.lt@verbatim-europe.com	+353 61 226586
Slovensko	support.sk@verbatim-europe.com	+353 61 226586
Slovenija	support.si@verbatim-europe.com	+353 61 226586
Türkiye	support.tr@verbatim-europe.com	+353 61 226586
Nederland	support.nl@verbatim-europe.com	00 800 3883 2222
Ελλάδα	support.gr@verbatim-europe.com	+353 61 226586
România	support.ro@verbatim-europe.com	+353 61 226586
България	support.bg@verbatim-europe.com	+353 61 226586
Hrvatska	support.hr@verbatim-europe.com	+353 61 226586
Srbija	support.rs@verbatim-europe.com	+353 61 226586
Suomi	support.fi@verbatim-europe.com	00 800 3883 2222
Sverige	support.se@verbatim-europe.com	00 800 3883 2222
Danmark	support.dk@verbatim-europe.com	00 800 3883 2222
Norge	support.no@verbatim-europe.com	00 800 3883 2222
الإمارات العربية المتحدة	support.sa@verbatim-europe.com	+353 61 226586
Україна	support.ua@verbatim-europe.com	+353 61 226586

## Limited Warranty Terms

Verbatim Limited warrants this product to be free from defects in material and workmanship for a period of 2 years from date of purchase. This warranty excludes batteries. If this product is found to be defective within the warranty period, it will be replaced at no cost to you. You may return it with your original cash register receipt to the place of purchase or contact Verbatim.

Product replacement is your sole remedy under this warranty, and this warranty does not apply to normal wear or to damage resulting from abnormal use, misuse, abuse, neglect or accident, or to any incompatibility or poor performance due to the specific computer software or hardware used.

**VERBATIM WILL NOT BE LIABLE FOR DATA LOSS OR ANY INCIDENTAL, CONSEQUENTIAL OR SPECIAL DAMAGES, HOWEVER CAUSED, FOR BREACH OF WARRANTIES OR OTHERWISE.** This warranty gives you specific legal rights and you may also have other rights which vary from state to state or country to country.

NOTE: Verbatim Limited may at any time revise the content of this user guide without further notice.

## Rights

Copyright © 2011 Verbatim Limited. No part of this document may be reproduced in any form or by any means, for any purpose, without the express written permission of Verbatim Corporation. All rights reserved.

All other brands and product names referenced herein are property of their respective owners.

## FCC Compliance

This equipment has been tested and found to comply with the limits for a Class B digital device, pursuant to Part 15 of the FCC Rules. These limits are designed to provide reasonable protection against harmful interference in a residential installation. This equipment generates, uses and can radiate radio frequency energy and, if not installed and used in accordance with the instructions, may cause harmful interference to radio communications. However, there is no guarantee that interference will not occur in a particular installation. If this equipment does cause harmful interference to radio or television reception, which can be determined by turning the equipment off and on, the user is encouraged to try to correct the interference by one or more of the following measures:

- Reorient or relocate the receiving antenna.
- Increase the separation between the equipment and receiver.
- Connect the equipment into an outlet on a circuit different from that to which the receiver is connected.
- Consult the dealer or an experienced radio/TV technician for help

## WEEE Notice

The Directive on Waste Electrical and Electronic Equipment (WEEE), which entered into force as European law on 13th February 2003, resulted in a major change in the treatment of electrical equipment at end-of-life.



The WEEE logo (shown at the left) on the product or on its box indicates that this product must not be disposed of or dumped with your other household waste. For more information about electronic and electrical waste equipment disposal, recovery, and collection points, please contact your local municipal household waste disposal service or shop from where you purchased the equipment.

## CE Declaration

### EC Declaration of Conformity

It is hereby declared that this product complied with the essential protection requirements of Council Directive 89/336/EEC and its amendments on the approximation of the laws of the Member States relating to electromagnetic compatibility. This declaration applies to all specimens manufactured identical to the model submitted for testing/evaluation.

EN 55022: 1998 + A1: 2000 +A2: 2003

EN 61000-3-3:1995 + A1: 2001

EN 55024: 1998 + A1: 2001 + A2: 2003

IEC 61000-4-2: 1995 + A1: 1998 + A2: 2000

IEC 61000-4-3: 2002 + A1: 2002

IEC 61000-4-4: 1995 + A1: 2000 + A2: 2001

IEC 61000-4-5: 1995 + A1: 2000

IEC 61000-4-6: 1996 + A1: 2000

IEC 61000-4-8: 1993 + A1: 2000

IEC 61000-4-11: 1994 + A1: 2000

### RoHS Compliance

This product is in compliance with Directive 2002/95/EC of the European Parliament and of the Council of 27 January 2003, on the restriction of the use of certain hazardous substances in electrical and electronic equipment (RoHS) and its amendments.